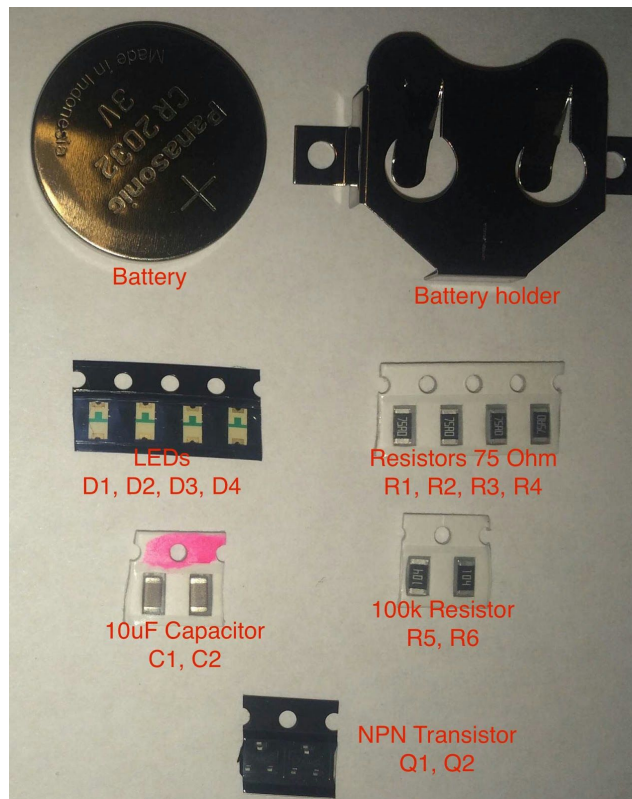
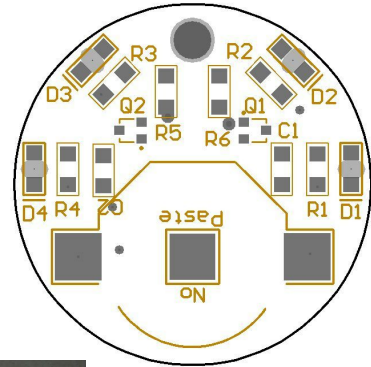


Reflowster Pendant Kit

Parts:

- PCB
- Coin Cell Battery
- Battery Holder
- 4x LEDs - D1, D2, D3, D4 (green markings on part)
- 4x 75 Ohm resistor - R1, R2, R3, R4 (black, 2 pins)
- 2x 10uF capacitor - C1, C2 (beige, 2 pins, marked pink)
- 2x 100k resistor - R5, R6 (black, 2 pins)
- 2x NPN transistor - Q1, Q2 (black, 3 pins)



Tools:

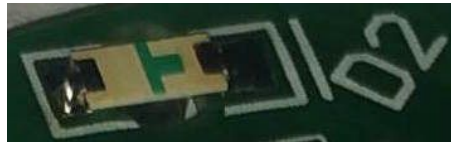
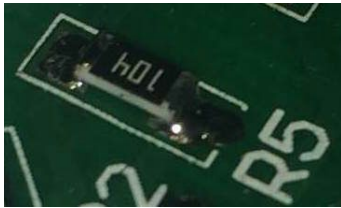
- Toaster oven
- Reflowster with cables and thermocouple (or similar controller)
- Solder paste (tube)
- Dental picks or toothpicks (for applying solder paste)
- Tweezers (for handling parts and board)

Useful resources:

- Reflow soldering guide: <http://reflowster.com/reflowsterresources/reflowsolderingguide.html>
- Reflowster manual: <http://reflowster.com/reflowsterresources/manual.html>
- Reflowster setup video: <https://www.youtube.com/watch?v=vOosTYbOTZg>

Instructions:

1. Set up your reflow toaster oven using the Reflowster setup video in the resources section above.
2. Unpack your kit, identify the parts, and gather the required tools
3. Squeeze a blob of solder paste onto a piece of paper, cardboard, or aluminum foil for easy access
4. Use a toothpick or a dental pick to place a small dab of solder paste on each contact, do not put solder paste on the central battery contact (labeled "no paste")
5. Starting with the smaller central parts and moving outward, place each of the small components on the corresponding pad. Use the parts list above to determine the correct place. Use the images below as a guide.



6. Double check that each component is seated properly and that there is no excess solder paste on the board. At this point, you can place some extra solder paste on top of the two battery holder pads
7. Carefully place the populated circuit board into your toaster oven. A metal tray (often included with toaster ovens) or some foil can be used to help manipulate the circuit board.
8. Double check that the thermocouple is positioned above and near to your circuit board, close the oven door, and start the reflow process by selecting "Go" on your Reflowster.
9. When Reflowster beeps and the status light turns blue, open the front of the oven to facilitate cooling.
10. Give the PCB some time to cool before touching it with your hands and inspecting the components to make sure that they reflowed properly.
11. Install your battery by sliding it into the holder with the text facing upwards.
12. If all went well, your pendant should be blinking, turn it over for the full effect. You can attach a piece of string through the hole at the top to wear it around your neck.
13. Take a picture and tweet it at us [@Reflowster](https://twitter.com/Reflowster), we'd love to see your finished pendant!